

Hoosier's Weekly Thursday Antique Auction



Jeffrey S. & Kerri-Lynn Chestnut, Auctioneers

**Held at: Harley P Chase VFW Banquet Hall
160 S. Broad St (RT 1), Pawcatuck, CT 06379**

Auction Starts 10am

Doors Open 8am to Set-Up & Preview

BREAKFAST & LUNCH CATERED BY IRENE

NO BUYER'S PREMIUM!!!! Consignment Paid Same Day!

Join Us Every Thursday for our Fast Paced, Wholesale, Quality Antique Auction!
Consignment Arrives The Day Of Sale Only!

Cash Auction! This is an ABSOLUTE Auction! No Phone or Left Bids!

Visa, MasterCard

NO Checks accepted without pre-approval & bank letter guaranteeing check

Reserve your Premium Table Wednesday Only 8am-5pm

1-866-738-8466 or 860-536-6545 or 401-391-1011

Walk-Ins always have a space with us!

Don't have enough merchandise to fill a table? We also sell quality individual items!

Remember at Hoosier Auction Co. "We'll Sell One Plate or Your Whole Estate!"

www.hoosierauctions.com

Directions: Boston & Points North I-95S to CT Exit 92. Left at light go to end. Left onto RT 2 East to end. Right onto RT 1 Hall approx. 1.5 mi on left. New York & Points South I-95N to CT Exit 92. Right at light onto RT 2 East to end. Right onto RT1 hall is approx 1 mi on left.

**ATTENTION ESTATES!
NOW TAKING CONSIGNMENTS
For upcoming antique auction**



**GREAT AMERICAN
AUCTION SERVICE, INC.**

Auctioneers/Wholesalers

58 Parker Avenue

Poughkeepsie, NY 12601

ph: 845-471-5107

Fax: 845-471-8962

Email: mary@greatamericanauktion.com

www.greatamericanauktion.com

Owners: Peter & Mary Francese

Winter Associates

Auctioneers & Appraisers

Advanced Notice (See ad in next week's issue)

Auction, Mon, 9/15, 6:30 pm

Previews: 9/14, 2-4 pm, 9/15, 3-6:15 PM or by appointment.

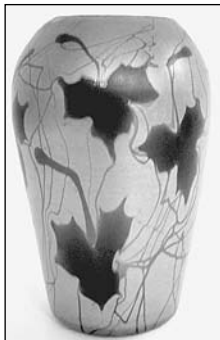
Featuring: Antiques & Fine Furnishings; Fine Art; Prints; Sculpture; Glass; Pottery; Doll Collection; Canton Collection & Other Orientalia; Oriental Rugs, etc.

www.AuctionsAppraisers.com

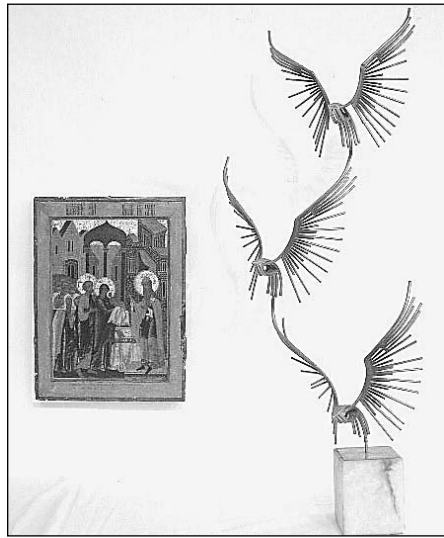
LOCATION: 20 mins West of Hartford, CT. Approx 2 hours from NYC or



M. Stein pastel



Tiffany vase



Icon; Jere sculpture



Dolls



E. Gay oil



T. Weber oil



Canton collection

Boston. **I-84W:** Exit 33 to Rt 72W, then take exit 2, left onto 372W, take first right onto Cooke St, 2nd drive on left; **I-84E:** Exit 34, left onto Crooked St, left onto 372W, after 6/10 mile take right onto Cooke St, 2nd drive on the left. **TERMS:** 15% Buyer's Prem, Cash, Approved Check, MC/Visa/Disc; absentee bids accepted.

21 Cooke Street Plainville, CT 06062 860-793-0288 or 800-962-2530 in CT



**Barbara's Unique
Antique Boutique's
Multi Estates & Collectibles**

AUCTION

Sunday Sept 14, 2008

Prev 1 PM Sale 2 PM

**Location Holy Trinity Church Hall
100 Main Street Helmetta, NJ**

500+ Lots Sold W/O Reserve, Partial List: Mega!!!

WWII Vet's 54+ Year Military Collection 100's All Theaters US Civil; WW1; Axis; Allies; Korea; Nam Insignia; Medals; Ribbons; Uniforms; Photos; Flags; Hats; Knives; Script; Tin Types; Stereoviews; Stamps; Leaflets++; CVA .50 cal Blk Pwdr, need NJ ID Card; mahg cherry walnut stands; pr petite drop leaf; curio game tilt tables; lds desk; silver chest; lamps; gun cabinet; clocks; gilt framed prints; mirrors; much more

100's smalls inc Waterford; Lladro; Victorian; much Lenox; stemware; cobalt; Stangl; Candlewick; Limoges; Fenton; cut; pressed; Noritake; much depression; pewter; carnival; Fostoria; Wedgwood; dinnerware sets; ruby; salt dips; Duncan; Cambridge; art glass; more; purses;

100+ Primo same theme dealer & collector lots; 50+ gold; silver; jewelry; watches; coins & cameos; sterling pcs; old dolls; doll house; furniture; violins; milk bottles; Hardy Boys; Star Trek; trains; FM trucks; cars; stitch textiles; sampler; ++ more, subject to error, Parking, Smoke Free, Catered

Terms: Cash, NJ Cks w/ID, AMX, Visa, MC, 10% Buyers Premium
DIRECTIONS: Exit 8A NJTPK, 3 Mi East to Jamesburg, 2 mi No Rt. 615 to Helmetta 732-521-1586 Info: View PDF files @ www.barbarasantiques.com Finocharrio, Reinhardt & Reinhardt

When We Have An Auction

You Just Know You Have To Attend!!!

GOLDEN GAVEL AUCTIONS L.L.C.

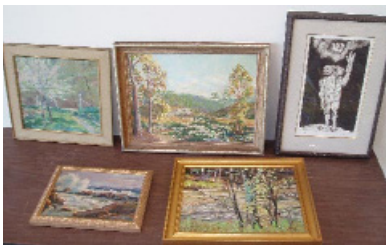
149 NORTH ROAD.,
RTE 140, EAST WINDSOR, CT
TEL. (860) 623-2100 or (888) 457-7778

Thursday September 11th, 2008

PREVIEW 2PM • Early Bird Auction (6pm to 7pm)

6 pm (Note Early Start Time) to include ~100 lots of used furniture, collectibles, box lots, table lots, tools, etc.

7pm ESTATE AUCTION HIGHLIGHTS:



Sampling estate artwork



Royal Dux



Furniture and smalls



KPM as found



von Schierholz



Oil of young girl, MT
Victorian
Walnut table

Furniture to include mahogany, walnut, oak, maple, and pine furniture, including Victorian walnut marble top table, Mahogany dining room set, additional dining room, living room, and occasional furniture to include chests, dressers, tables, chairs, etc!

Smalls to include artwork and prints including Winifred E. Efferts o/b trees, Helen Cozens Hill o/b "California Spring Time", Fenner o/c, Beneway o/b young girl, plus additional artwork and prints, lighting, porcelain including large signed Royal Dux figural couple, KPM (as-found) ladies, von Schierholz centerpiece, many additional figurines and figural groupings, Depression era glassware including Cloverleaf, Poinsettia (in pink and green), Coin glass, Parrot in green, Florentine in yellow, Horseshoe in green, S pattern, Daisy, Spiral in green, Adam in pink, Moonstone, Ripple, Madrid, Heritage, Coronation, Lace edge, Daisy in amber, etc, pottery, decorative smalls, still sorting through estates so expect many more surprises and good quality smalls!

For color images and further information visit our website at www.goldengavel.com

Email with questions goldengavel@att.net

or visit auctionzip.com and search our AuctionZip Auctioneer ID#: 2791

Auctioneers: Patrick Soucy, Ralph Labozzo and Ron Gyllenhammer

400+ lots expected for each auction.

Estate auction every Thursday evening!

Terms: Cash, Checks, Master card, Visa, Discover, Debit cards.

Subject to errors and omissions
Please note effective September 1st, 2008 18% buyer's premium, 3% discount for cash or approved check, all sales final.

Directions: From I-91 exit 45, go to Rte 140 East (cross over Rte. 5, travel 1 mile, see Plaza on left). 15 min. north of Hartford, CT & 15 min. South of Springfield, MA.
Always accepting quality consignments for our auctions. Call to discuss. We offer a full auction service and will sell anything of value for you.

DATE	AUCTION TIME	DESCRIPTION
Thurs. September 4th	7pm	Estate Auction with Country furniture and quality smalls
Thurs. September 11th Sat. September 13th	7pm 11am	Estate Auction Golden Gavel Customer & Employee Picnic (call for tickets & details)
Thurs. September 18th Thurs. September 25th	7pm 7pm	Estate Auction Estate Auction

Come join us for a fun, fast paced, friendly auction!